



**Literary Solutions for ALL!**  
**K-12 Literacy Development  
and Acceleration for Virginia**



**Lexia<sup>®</sup>**  
**Virginia**

# All for Literacy in Virginia

Because Literacy Can and  
Should Be for All



## Lexia Is Virginia's Partner in Structured Literacy

Through a singular focus on literacy and a full spectrum of solutions to support it, Lexia® helps more learners read, write, and speak with confidence. Our solutions are rooted in the science of reading, ensuring they meet Virginia's commitment to supporting early literacy development.

**Lexia's portfolio is grounded in the principles of the science of reading**

### Curriculum



PreK-5



K-6



6-12

### EMBEDDED ASSESSMENT



Assessment Without Testing

Actionable data for educators and administrators

### Professional Learning



PreK-5



4-8



Customer Success support at every step of the journey



I have found that Lexia® Core5® Reading is the most effective technology-based literacy program available today. It helps our students build foundational literacy skills, identifies skill gaps as they emerge, and provides my teachers the instructional materials to address those gaps.

— Alex O'Dell, Principal, Mary Walter Elementary School, VA



**All for Literacy**



## Adaptive Blended Learning

### A Purposeful and Personalized Approach to Teaching and Learning for Virginia

Lexia's personalized learning model ensures differentiated, adaptive instruction in support of Virginia students and teachers. By combining independent online learning and face-to-face instruction with our exclusive Assessment Without Testing® approach, we are creating a true **blended learning** environment.

- Our model blends teacher-led instruction with purposeful technology.
- Every student receives individualized, data-driven learning paths to optimize literacy growth.

### The Lexia Personalized Learning Model

#### Independent, Student-Driven Learning

- Motivating and engaging interface
- Self-directed learning
- Remote-ready

#### Assessment Without Testing

- Real-time, on-the-spot progress monitoring
- Prioritized and group instruction
- Standards-aligned reporting

#### Teacher Resources

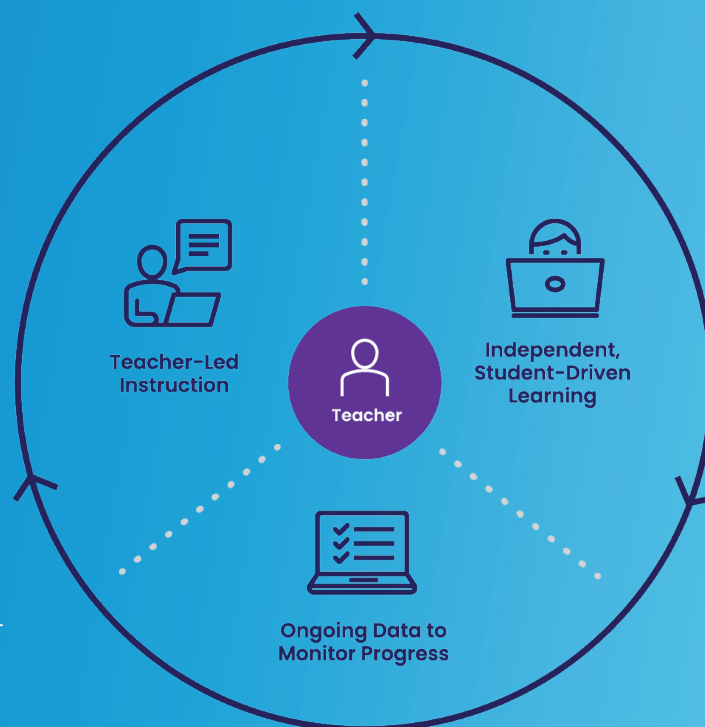
- Auto-assigned to target specific student needs
- Face-to-face and practice/extension resources
- Complements the ELA standards

**Lexia is Virginia's blended learning partner!**



## Adaptive Blended Learning Model

- Students are motivated by their own success as they follow personalized learning paths.
- Performance data is easy to access and simple to interpret.
- Program resources support teacher-led instruction and independent student practice.
- Personalized learning is targeted and time-efficient, with the teacher at the core of every step.
- Based on research-validated, adaptive auto-placement, students begin Core5 at the level that's just right for them.



## Flexible Fit Into Existing Curriculum



### Student-Driven Learning

Students learn and practice with the online student program during classroom center rotations, in the computer lab, or at home.



### Small-Group Instruction

Teachers deliver targeted skills-based instruction with offline Lexia Lessons®.



### Collaborative or Independent Practice

Students extend their learning in center rotations—either independently or with a partner—through the reading, writing, speaking, and listening activities in Lexia Skill Builders® and Lexia® Connections.



Tiers I, II, & III



Homeroom/Advisory



Computer Lab



Classroom Center Rotations



Summer School



At-Home/Remote Learning



Before & After School





Language Essentials for Teachers  
of Reading and Spelling



### Professional Learning Solutions



**LETRS professional learning for elementary educators** is an investment in teachers' literacy knowledge and professional practice. Teachers gain essential knowledge to master the fundamentals of literacy instruction required to transform student learning.

LETRS is accredited by the International Dyslexia Association (IDA) and meets the IDA standards for teachers of reading.



**LETRS® for Early Childhood Educators professional learning** provides deep knowledge of literacy instruction for the youngest learners. The more children know about language and literacy before they begin kindergarten and first grade, the better equipped they are to succeed in literacy learning and beyond.

**LETRS® for Administrators** equips instructional leaders to create systems and structures in their schools and districts to achieve high levels of academic performance and growth in literacy. Designed to target the needs of instructional leaders, the LETRS for Administrators professional learning course of study teaches how to build capacity, collaborate with school leadership teams, manage goal setting, develop assessment plans, and make effective data-based decisions to have systemic impact on student literacy achievement.

## How Does LETRS Accelerate Teacher Knowledge?

LETRS addresses four critical outcomes for effective literacy instruction: understanding the science of reading, converting research to practice, enhancing teacher effectiveness, and transforming instruction. By understanding the “why” behind the science- and evidence-based research, educators can effectively aid students in learning to read. LETRS professional learning is relevant, applicable, and designed to be the cornerstone of a multiyear, systemic literacy improvement initiative.



### **Explains the Science of Reading**

LETRS leverages decades of research, including the latest neuroscience, to help educators identify the source of reading difficulties and how to teach more effectively.



### **Converts Research to Practice**

Evidence-based research and strategies explain the “why” behind the comprehensive literacy instruction, providing explicit instruction about “how” to effectively teach for the best results.



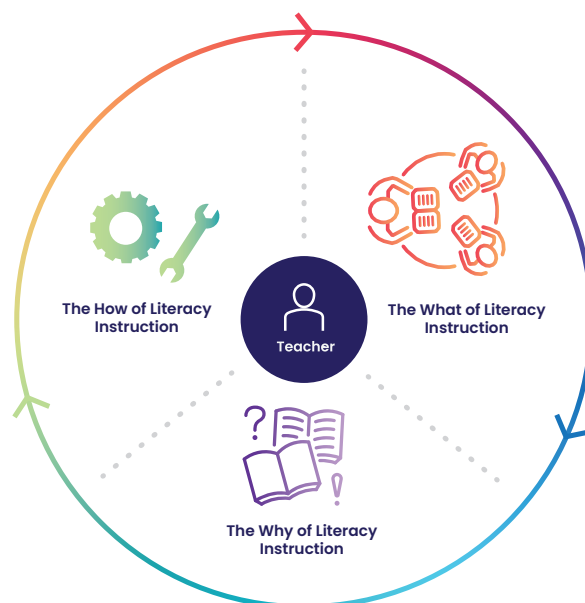
### **Enhances Teacher Effectiveness**

Teacher effectiveness is more significant to student achievement than any other factor. When teachers know the “why” and “how” of reading, they can change lives.



### **Transforms Instruction**

LETRS provides a common language and understanding of evidence-based reading practices; promotes effective and consistent literacy instruction across a school, a district, and a state; and helps prevent and remediate reading difficulties for all students.





# Aspire Professional Learning

## Description and Overview for Virginia Educators

Grounded in the science of reading, Lexia® Aspire™ Professional Learning is a flexible, self-paced digital solution that empowers educators to accelerate literacy skills among students in grades 4–8.

Aspire offers professional learning solutions for all upper elementary and middle school educators, including content-area teachers, classroom teachers, interventionists, and ELA educators. It also gives them the agency to choose content that is most relevant to improving their students' literacy outcomes.





## Benefits of Aspire Professional Learning

Aspire Professional Learning is designed and developed specifically for educators of adolescent students, where the focus is on reading to learn. Aspire equips educators with the knowledge and skills they need to apply science-based strategies to a classroom that has varying levels of literacy competencies.

The program provides six key benefits for educators:



### 1. Choice, agency, and flexibility

Aspire is on demand. After setting the foundation for educators with a few prerequisite courses based on their interests and needs, educators can choose which domains they engage with and the sequence in which they complete the courses. Educators can also revisit the courses as many times as they would like.



### 2. Personalized continuous learning

Educators receive personalized content in response to their performance. This way, users who master concepts can progress, while those who need additional scaffolded support receive it.



### 3. Practical and transferable

These courses support upper elementary and middle school educators with meaningful research, as well as “Bridge to Application” opportunities that apply evidence-based concepts and best practices in daily classroom instruction with ready-to-use classroom resources.



### 4. Evidence-based pedagogy

Aspire uses evidence-based findings from the science of reading. This solidifies an understanding of how language and writing systems work for adolescent students by informing the why, what, and how of effective and comprehensive instruction for better student outcomes.



### 5. Progress monitoring for school leaders

School leaders can see the progress of their educators through data on completion rates, time spent, “Check for Understanding” quiz scores, and assessments that are conducted throughout and at the end of the program to check educators’ growth and progress.



### 6. Alignment and accreditation

The courses are aligned with the International Dyslexia Association’s (IDA) *Knowledge and Practice Standards for Teachers of Reading*, and “Bridge to Application” resources are aligned with the Common Core State Standards. Participants have the opportunity to earn graduate-level credits from the American College of Education (ACE).

## Flow and Structure

Aspire is based on the principles of the science of reading and Lexia's expertise in literacy for K-12. The program is designed to address educators' needs by helping educators support learners in how to read, comprehend, and articulate their ideas across various subjects.

To accommodate educators' busy schedules, Aspire provides an on-demand, self-paced digital professional learning program that focuses on training for Word Recognition, Language Comprehension, Reading Comprehension, and Writing. To start, all participants complete the prerequisite requirements. Educators can then select the domains and course sequence they'd like to attempt.

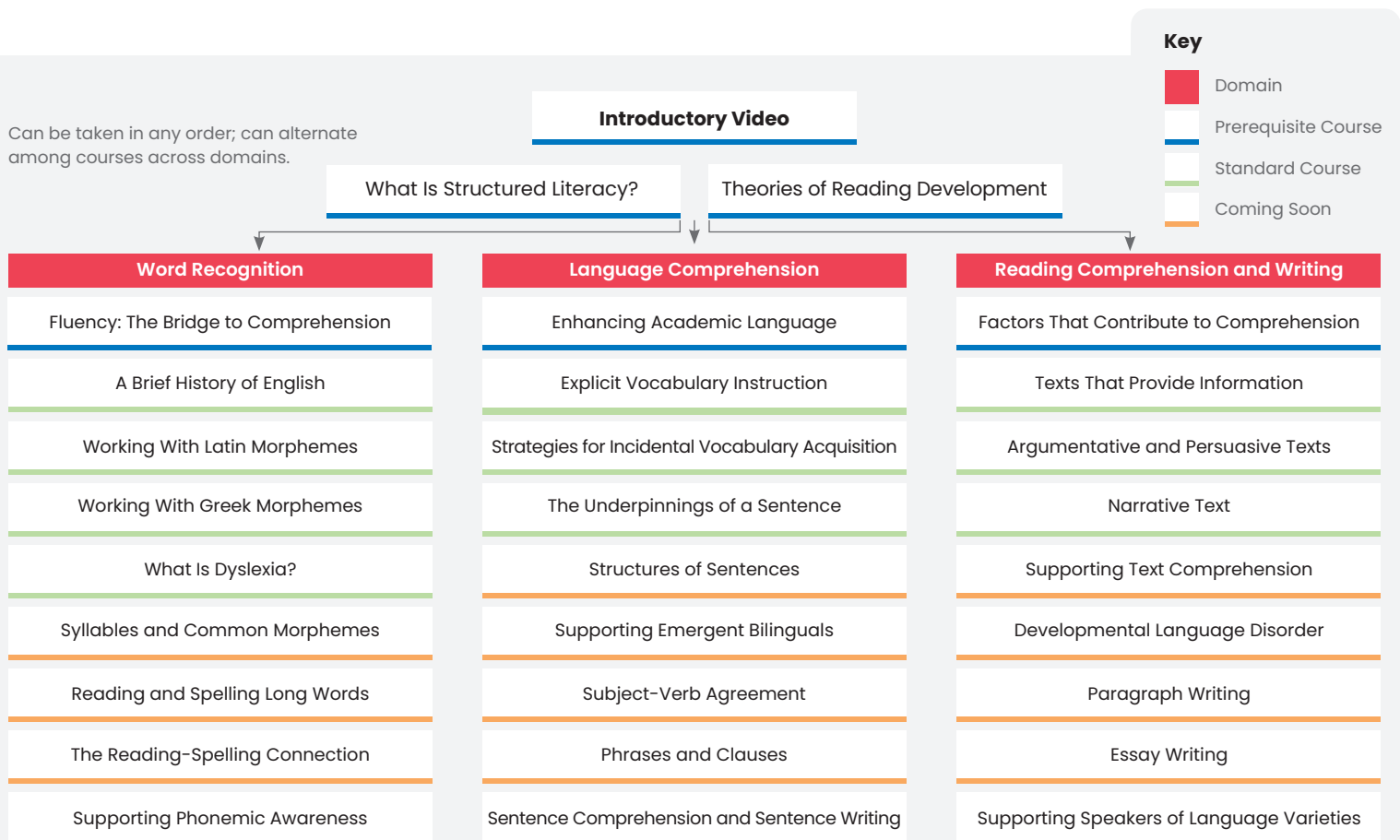
There are a total of three domains, with 29 courses that have 138 bite-size modules,

collectively. The program takes approximately 40 hours to complete.

The program is structured as follows:

- Pretest
- Prerequisite courses
- Three domains with nine courses each
- "Check for Understanding" quizzes at the end of each course
- Classroom resources in each course
- Assessments throughout to check progress

Scoring 80% or higher on the "Check for Understanding" quizzes earns participant educators a mastery certificate for that course, while scores below 80% receive a completion certificate. As mentioned, users can return to courses in the future, and each license is valid for one user for one year.



An assessment will be done at the start and end of the program to check for growth and engagement.

## Why Aspire Professional Learning?

### **Aspire provides an opportunity to accelerate student learning**

Even before the COVID-19 pandemic, over 66% of students in eighth grade were below or at basic literacy proficiency level, and 71% of educators felt that students wouldn't be prepared for grade-level content. To alleviate this trend, it's critical that schools and educators focus on deliberate literacy skill-building through middle school to give learners a substantial chance of succeeding in college and the workforce.

### **Professional learning in literacy is vital to student success in all subjects**

A total of 85% of the public-school curriculum is delivered via reading text. Literacy is a cornerstone of success across all core classes, and students must read well to do well. So, it's vital that schools continue integrating reading best practices across the curriculum beyond early elementary grades. In the years that follow, reading requires explicit, systematic, and cumulative instruction that is diagnostic and responsive. Therefore, training educators in literacy skills across subjects is essential for student success.

### **Preparing educators to teach literacy skills to adolescents can be a challenge**

Through no fault of their own, many educators teaching in grades 4–8 have not had the opportunity to learn how to teach literacy skills. Until now, there was limited evidence-backed content designed for content-area teachers working with adolescent learners in classrooms that may include students of varying literacy competencies. Though literacy skills are highly critical, educators are busy,

and reading isn't their primary focus area for this age group.

Accordingly, a solution for those who work with adolescent learners shouldn't be a long, intensive certification course. Instead, they require a resource that understands the depth of skills needed and provides this in a continuous, flexible, less time-consuming manner.

### **Aspire enables educators to help students succeed by powering the learners' literacy capabilities**

Aspire is designed by Lexia's team of literacy experts using the science of reading as its foundation. Lexia has been in the literacy field for over 35 years and, leveraging Lexia's expertise in developing evidence-based literacy and professional learning solutions, Aspire aligns with the needs of educators who work with adolescent students.

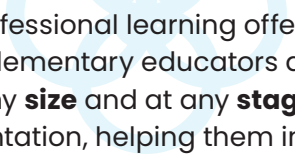
The program helps all upper elementary and middle school educators build literacy skills among their students. We're cognizant that educators have limited time even to cover their core coursework, so we train educators to weave in literacy skills and strategies in their areas of expertise.

Our content and execution are unique. The course is backed by solid pedagogy and deliberately designed to benefit educators and learners in upper elementary grades and middle school. That way, literacy skills are no longer a barrier to learning content and skills across disciplines and instead influence significant, overall improvement in learners' academics.

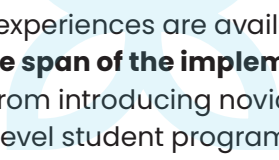




Core5 professional learning is focused on the implementation of adaptive blended learning in pre-K–5 learning environments, along with the effective analysis of student data to diagnose and respond to areas of strength and need in reading.



Core5 professional learning offerings support elementary educators at sites of any **size** and at any **stage** of implementation, helping them increase their knowledge of personalized literacy instruction and gain expertise in using the Core5 program to accelerate the development of literacy skills for students of all abilities.



Learning experiences are available **across the span of the implementation journey**, from introducing novice users to the 21-level student program and blended learning components to encouraging advanced users to explore and innovate with Lexia resources and data, thereby enhancing personalized literacy instruction.

The percentage of Virginia students working on material in or above grade level **more than doubled** across the 2021–2022 school year (grew from 39% to 85% of students who used with fidelity).

## Acceleration for All

Core5 provides all students—from at-risk to on-level and advanced—a systematic and structured approach to six areas of reading, from phonological awareness to comprehension.



### Supports foundational literacy by:

- Developing phonemic awareness
- Building understanding of letter-sound connections
- Expanding vocabulary
- Teaching word recognition

### Supports advanced literacy by:

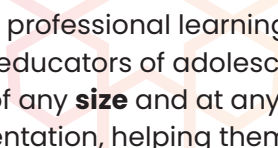
- Building academic language skills
- Developing skills for deep comprehension and text analysis
- Cultivating disciplinary knowledge
- Sparking higher-order thinking

Lexia <b>CORE5</b> READING			Scope & Sequence					
Lexia® Core5® Reading provides a systematic and structured approach to six critical areas of reading. The program creates personalized learning paths for students of all abilities through an adaptive placement and scaffolded activities that align to rigorous standards.			Phonological Awareness	Phonics	Structural Analysis	Automaticity/Fluency	Vocabulary	Comprehension
Pre-K	LEVEL 1	A Picnic in the Woods	•	•		•	•	•
Kindergarten	LEVEL 2	A Day at the Beach	•	•		•	•	•
	LEVEL 3	A Snow Day in the City	•	•		•	•	•
	LEVEL 4	The Amazon Rainforest	•	•		•	•	•
	LEVEL 5	The Scottish Cliffs		•		•	•	•
	LEVEL 6	A Day in Paris		•		•	•	•
Grade 1	LEVEL 7	The African Serengeti		•		•	•	•
	LEVEL 8	The South Pole		•		•	•	•
	LEVEL 9	The Egyptian Desert		•		•	•	•
	LEVEL 10	An English Garden		•	•	•	•	•
Grade 2	LEVEL 11	The Swiss Alps		•		•	•	•
	LEVEL 12	A Russian Circus		•	•	•	•	•
	LEVEL 13	The Indian Rainforest		•	•	•	•	•
Grade 3	LEVEL 14	A Japanese Garden		•	•	•	•	•
	LEVEL 15	A Journey Through China		•	•	•	•	•
	LEVEL 16	The Great Barrier Reef		•	•	•	•	•
Grade 4	LEVEL 17	A Hawaiian Paradise		•	•	•	•	•
	LEVEL 18	A Mexican Valley		•	•	•	•	•
	LEVEL 19	The Southwest, USA		•	•	•	•	•
Grade 5	LEVEL 20	The Ancient Greek Countryside		•	•	•	•	•
	LEVEL 21	Mesopotamia: Land Between Two Rivers		•	•	•	•	•

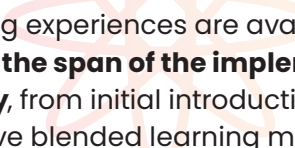
www.lexialearning.com



Lexia® PowerUp Literacy® professional learning is designed to enable educators to maximize student learning through a truly personalized experience that addresses individual skill gaps, accelerating literacy gains for students who are at risk of not meeting College- and Career-Ready Standards.



PowerUp professional learning offerings support educators of adolescent learners at sites of any **size** and at any **stage** of implementation, helping them address gaps in fundamental literacy skills while simultaneously building higher-order analytical skills to accelerate learning across a broad range of students.



Learning experiences are available **across the span of the implementation journey**, from initial introduction of the adaptive blended learning model into the learning environment to in-depth data analysis and next-steps planning for individualized learning pathways, yielding faster literacy gains.

**POWERUP  
IS UP TO 5x**  
as effective as the average middle  
school reading intervention program.



## Based on the Simple View of Reading

The research-proven Simple View of Reading states that reading success is dependent on both word recognition and language comprehension. If a student does not have adequate underlying skills in both of these areas, reading success is compromised. Struggling adolescent readers have such varied skill profiles that what works for one student may not be best for another. For this reason, PowerUp is split into three domains: **Word Study**, **Grammar**, and **Comprehension**.



### Word Study

Students develop accuracy and automaticity with decoding skills so they can shift their cognitive resources to deriving meaning from what they need.

- Phonemic Awareness
- Phonological Awareness
- Phonics
- Structural Analysis
- Decoding
- Spelling
- Fluency
- Morphology



### Grammar

Students learn how parts of speech function in sentences and how parts of sentences convey meaning to improve both reading comprehension and written composition.

- Parts of Speech
- Parts of Sentences
- Capitalization
- Punctuation
- Text Structure



### Comprehension

Students develop skills and strategies needed for higher-order text analysis using increasingly complex original and authentic texts that are appealing and relevant to adolescent learners.

- Text Elements
- Author's Craft
- Higher-Order Thinking
- Literary Vocabulary
- Analysis and Evaluation of Two Sources





Lexia® English Language Development™ professional learning is designed to enable educators to create individualized learning paths for Emergent Bilingual students and support English language acquisition through academic conversations.

Lexia English professional learning offerings support Emergent Bilingual educators at sites of any **size** and at any **stage** of implementation, helping accelerate English language acquisition and lay the groundwork for literacy development by creating opportunities for students to acquire and practice listening and speaking skills.

Learning experiences are available **across the span of the implementation journey**, including getting started with the student program, grouping students for meaningful language practice, and integrating language frames into the learning environment to help students make sense of and properly use grammatical conventions in conversation.

## Personalized Instruction for Each Learner

Culturally and ethnically diverse characters engage and encourage students throughout their learning journeys, while interactive academic conversations empower students to build the linguistic competence and confidence needed for academic success.



# Why Lexia English?



## ASSESSMENT WITHOUT TESTING®

Ongoing progress-monitoring data

Reporting at the student, class, grade, school, and district levels

Actionable data for targeted instruction

## ALIGNED TO WIDA LANGUAGE PROFICIENCY STANDARDS

Rigorous academic content

Supports language acquisition for students at all proficiency bands

## ADAPTIVE BLENDED LEARNING MODEL

Individualized learning paths

Independent, student-driven learning

Resources for in-classroom applications

Teacher-led, small-group instruction and practice

## CULTURAL RESPONSIVENESS

Views learners' heritage languages as an asset

Celebrates student achievements

17 Emergent Bilingual characters support and engage learners

## AUTO-PLACEMENT

Determines correct entry point into the program

Assesses both receptive and productive language skills

Places students based on knowledge and use of English

## SPEECH RECOGNITION TECHNOLOGY

Immediate, guided, corrective feedback

Safe, nonjudgmental environment

Helps students build linguistic confidence in academic English

## INTEGRATING SPEAKING, LISTENING, AND GRAMMAR SKILLS IN ACADEMIC SUBJECTS



Math



Science



Social Studies



General Knowledge



Biographies



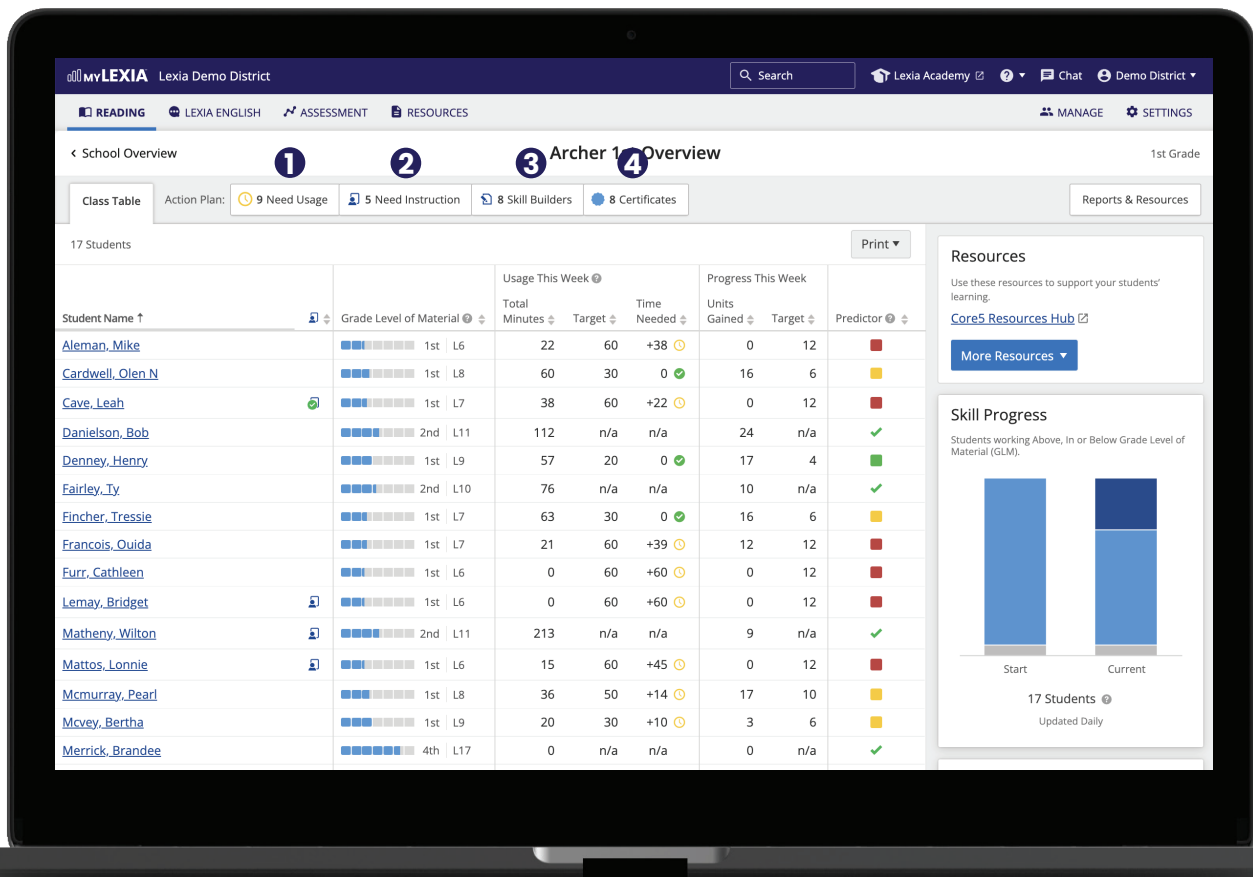


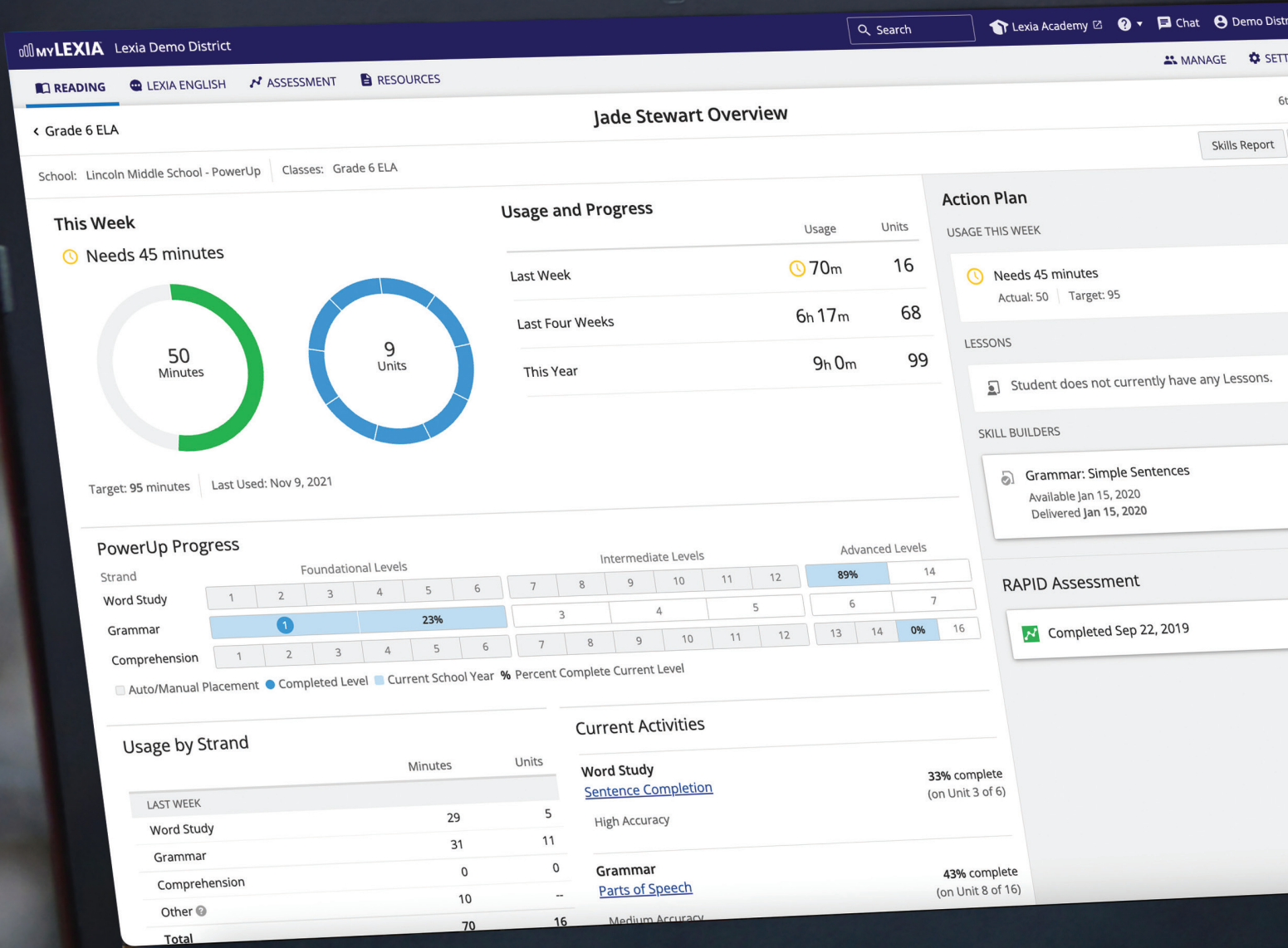
## Differentiated Support for Teachers and Administrators

Assessment Without Testing data, powered by the myLexia® platform, provides teachers and administrators with real-time, actionable data that **helps answer relevant questions** for both district/school leaders and teachers at a glance.

**In just minutes, teachers can answer:**

- 1** Who needs more time in the online program?
- 2** Who needs teacher-led instruction?
- 3** Who is ready for additional practice?
- 4** Who is ready to celebrate success?





## Assessment Without Testing

Lexia's patented Assessment Without Testing (AWT) technology provides teachers and administrators real-time, progress-monitoring data without stopping instruction to give a test, **saving teachers up to a MONTH of instructional time** by:

- Identifying student risk levels
- Prescribing instructional intensity
- Providing daily, weekly, and monthly progress-monitoring data
- Presenting action plans to provide "next steps" for instruction



Every student, class, and school is unique. That is why Lexia Success Partnerships are designed with you in mind.

Lexia Success Partnerships combine the power of our solutions with the expertise of our dedicated Customer Success Managers. Our literacy experts collaborate with your leadership team to set goals that align with your instructional and staff needs, then partner with you to develop and monitor a customized implementation plan designed to achieve the outcomes you need for both students and educators.

### **How will we partner with Virginia school districts?**

**Personalized  
professional  
learning goals**

**Engaging  
sessions that  
encourage active  
participation**

**Effective  
approaches that  
deliver outcomes  
for educators and  
students**

**Relevant  
professional  
learning**





Lexia, a Cambium Learning® Group company, is the Structured Literacy expert. For more than 30 years, the company has focused solely on literacy, and today provides a full spectrum of solutions for both students and teachers. With robust offerings for differentiated instruction, personalized learning, assessment, and professional learning, Lexia helps more learners read, write, and speak with confidence.



© 2023 Lexia, a Cambium Learning® Group company. Lexia®, Core5®, and other trademarks, names, and logos used herein are the property of Lexia and/or its subsidiaries, and are registered and/or used in the United States and other countries. Additional trademarks included herein are the property of their respective owners.